



Global Standard Engineering and Solution
ISO 9001:2015 Certified Company

Industrial Pump

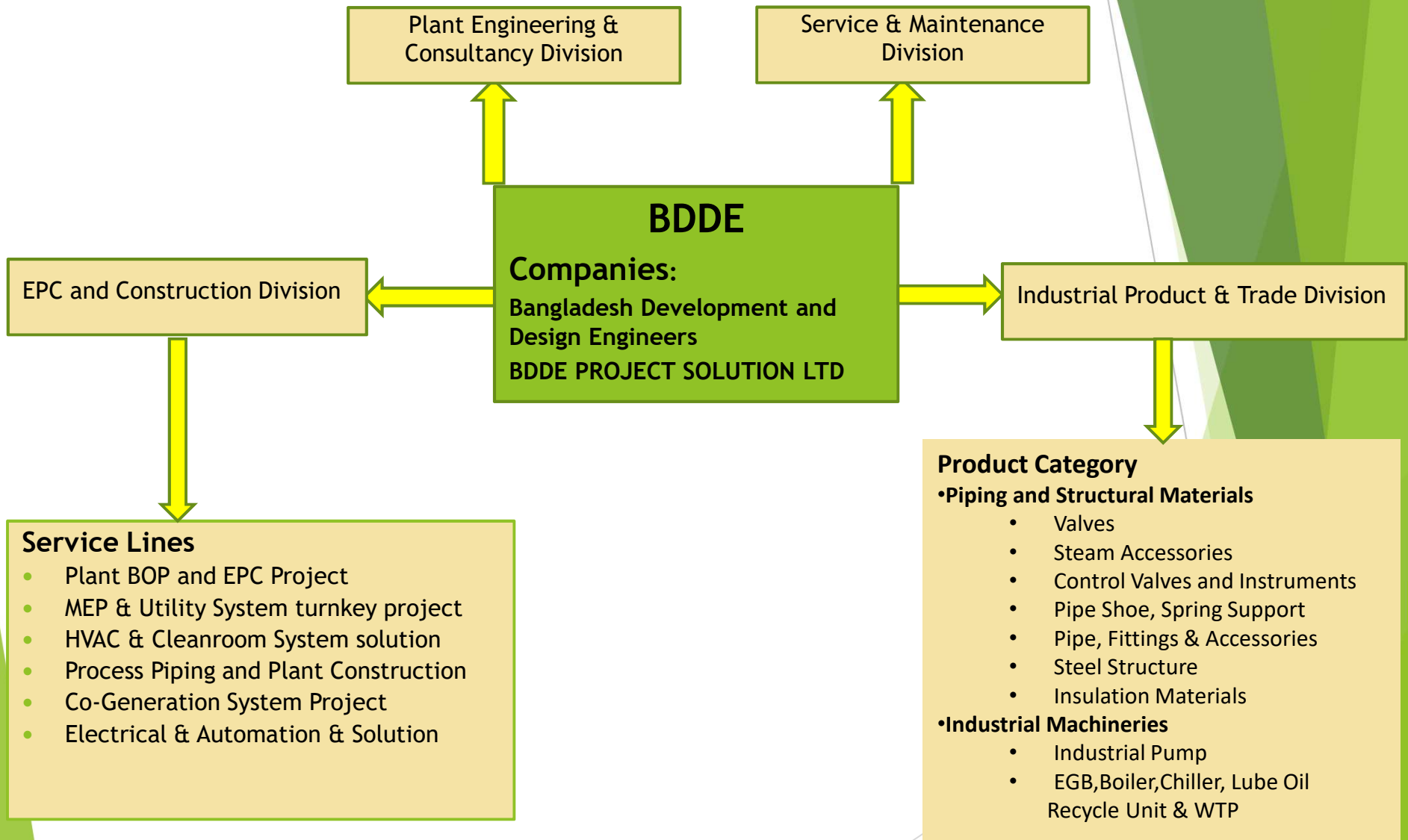


PRODUCT BROCHURE



Fluid and Thermal Technology Products

Business Divisions



Introduction

Background

Started in 2004 as an offshore engineering design service provider for Large EPC companies in Europe, the founders of BDDE Later diversified its business as Engineering and Turnkey Contractor Along with Reliable Product Manufacturing and Trading for industrial sectors in Local Market. Since then it is serving to prestigious/major industrial projects with turnkey engineering solution and Quality Product and achieved Good reputation for the commitment of timely project hand over, Zero Fatality, Excellent performance, reasonable price and after sales service.

Vision

Our vision is to provide Global Standard Engineering solution and products for Industrial Projects worldwide through development of human resource

Mission

To be an outstanding company and dominant player among the peers and delight the customers through products and services with continuous improvement

Activities:

- Import, Stock and Trading
- Manufacturing
- Turnkey Project
- Service

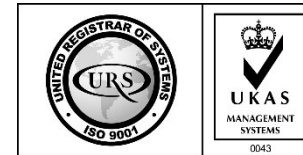
Engineering - Optimization - Performance

Quality Policy

Started in 2004 as an offshore engineering design service provider for Large EPC companies in Europe, the founders of BDDE Later diversified its business as Engineering and Turnkey Contractor Along with Reliable Product Manufacturing and Trading for industrial sectors in Local Market. Since then it is serving to prestigious/major industrial projects with turnkey engineering solution and Quality Product and achieved Good reputation for the commitment of timely project hand over, Zero Fatality, Excellent performance, reasonable price and after sales service.

HSE Policy

Our vision is to provide Global Standard Engineering solution and products for Industrial Projects worldwide through development of human resource Our vision is to provide Global Standard Engineering solution and products for Industrial Projects worldwide through development of human resource



Our Achievements

Successful Project Involvement

- ▶ **1200 MW** total power generation project involvement with Different Engineering, Supply and Construction services which are now lighting up Bangladesh.
- ▶ **13,40,000 Sft** Pharmaceutical and Other Facility MEP/Utility and HVAC system involvement with different Engineering, Supply and Construction service which are now in Operation.
- ▶ **23,000 M3** Capacity storage tanks, construction completed in total including engineering and supply, now are in operation.
- ▶ **2000 RT** HVAC system project involvement in total which are running smoothly with desired performance.
- ▶ **17000 MT** steel Detailing and Fabrication done in total with certified welder now in service.
- ▶ **4,97,000 ft** pipeline system Engineering, Supply and Construction done for Power, Pharma and Process industries now in operation.
- ▶ **'0'** fatality since we started Business proves our strict safety policy.

Office Staff (Engineer & Designer): 20 Nos
Office Staff (Admin & Commercial): 10 Nos
Office Area : 3000 sqft
Stock Warehouse: 6000 sqft
Display Center: 700 Sqft
Global Offices

Happy Clients



Product Warehouse, Service Centre and Display Centre

We Have our Product Warehouse nearby Dhaka with Sufficient stock of Pipe, Fittings, Valves to support our customer instant Demand.

Also a dedicated service center Located in the same premises with strong service team to support after sales service activities.



EUIPMENT MANUFACTURING FACILITY:

- Cutting Machine
- Bending Machine
- Rotator
- EOT Crane
- Heavy Duty Drill
- TIG/MIG/SMAW Welding Facility as per ASME Code
- 24 hour Power Supply with Backup DG
- Blasting and Painting Both
- Necessary Testing Facility



Our Specialty

Testing, Certification and Quality Control Team with Application Experience

We have proven track record of 15 years to deal with different Industrial products supply and project execution along with after sales service. Our own QAP ensure required quality and traceability of raw materials from sourcing to final production process. We Ensure Valid MTC, Third Party PSI as per client Requirement.

Products according to International Code and Standard with Optimum Design

Products are Designed and Engineered optimally to ensure Desired Performance and reasonable price for our customers. Our team is well conversant with the Codes and Standards and to apply them to achieve reliable product quality



TIANJIN BAOLF STEEL CO.,LIMITED

天津市明洋金属制品有限公司

Client:		PI No.	LR20181227020	Contract Date:	2018-12-18	Invoice No.:	LR20190025	Date:	2019-02-23
客户名称:		PI号		合同日期:		发票号:	020	日期:	
INSPECTION		Material	ASTM A106 Gr.B	Dimensional and Visual Inspection:		Good		Certificate NO.	
检测标准		材料	AOC01 21 IVO UL D	尺寸和外观检测		合格		合格证书号	
								20190123 IP	
		</							

Our Specialty

Expert Technical, Commercial and Logistic Team Connected With Global Partners

Our Professional Commercial and Logistic team is a key player can source the right product for your project, Handle Commercial and logistic process quickly and carefully to ensure your product delivery in shortest and safest way for execution of project within scheduled time. Our Team connected seamlessly with our Global Partners and offices in Europe, China and India who support us dedicatedly to run our operations smoothly in Abroad.



OEM Manufacturing Facility

Our Manufacturing Facilities are equipped with modern Fabrication, testing, Painting facility . CNC Lathe Machines are used to manufacture High Quality Valves and Pipeline Products in our Manufacturing Facility.

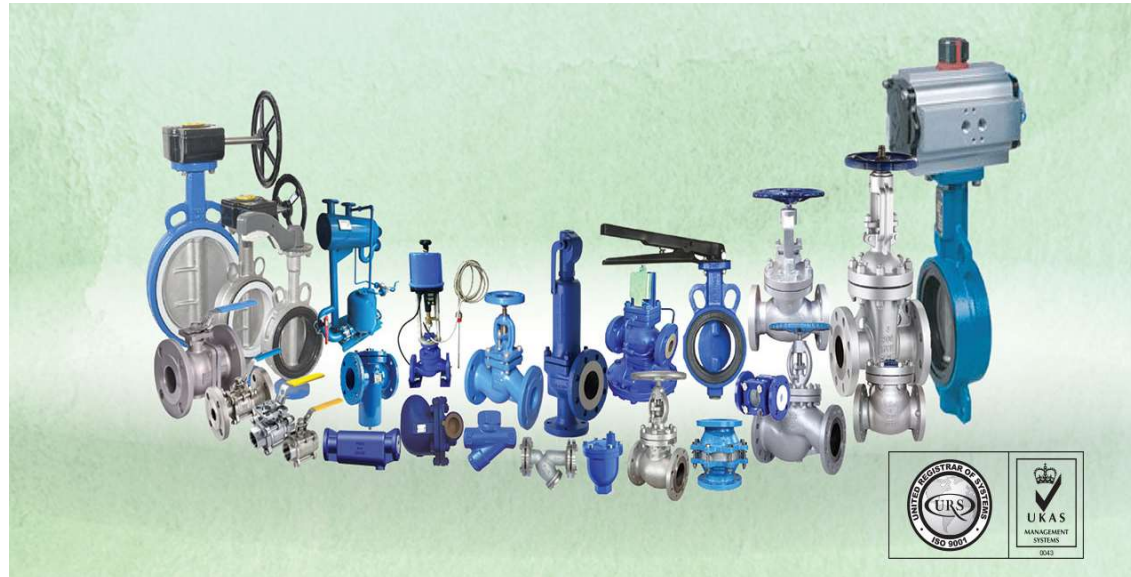


Product Showcase

Piping and Structural Materials

Valve and Steam Accessories

Together with valve accessories, control valves serve as engineered solutions for special applications. BDDE Project Solution Ltd. has been developing and manufacturing high-quality valves, actuators and valve accessories for over 2 years in the name of FT-TECH brand. Thanks to our experience and expertise as well as customer requirements, we have continuously developed the individual components and optimized their interaction. Our engineering experts actively work to find the best solution for our valve assemblies. Linear and rotary valves require different mounting kits, for example to attach solenoid valves, limit switches or lock-up valves.



Product Features

Rating: ANSI 150#, 300#, #600, 800#, DIN PN16

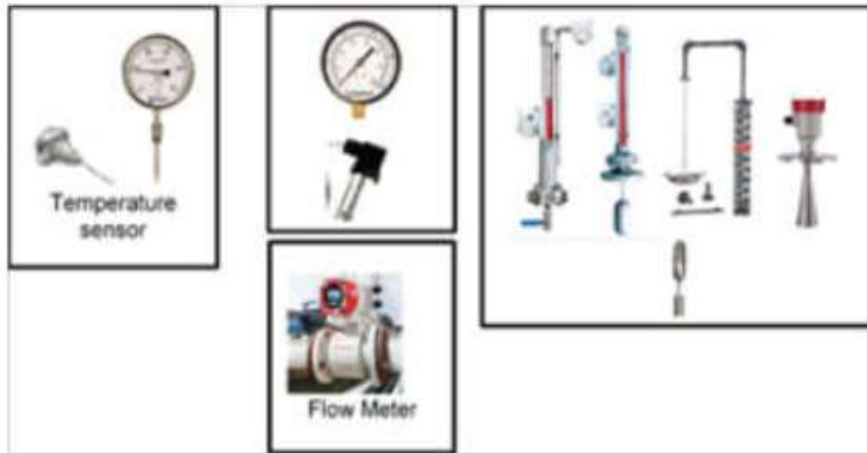
Material: Cast Iron, Carbon Steel, Forged Steel, Stainless Steel

Standard: ANSI, API, DIN

Application: HFO, Diesel Oil, Fuel, Lube Oil, Steam, Gas, Hot Water, Air, Thermal oil, Chemical.

Product Showcase

Control Valve and Instruments



Pipe Shoe Spring Support

Product Features

Customized Engineered as per Calculation

Local Support

Sand Blasting/Galvanized/Epoxy finish as per client requirement

Pipe Supports and Clamps



Product Showcase

Pipe, Fittings and Related Items



Rating: ANSI 150#, 300#, 800#, 1500#, 40 Schedule, 20 Schedule, 10 Schedule, 160 Schedule.

Material: Rolled Steel A106, A53 Gr B, A36, A570, Corten Steel, SS304, SS316, SS400, Q235, Q345, Cast Steel WCB A216, CF8, CF8M, Carbon Steel, Forged Steel A105, F304, F316

Insulation materials, Fastener, Gasket



Steel Structure

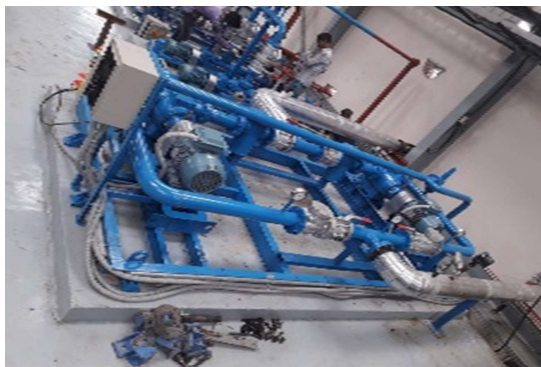
Product Showcase

Industrial Machineries Pump, Boiler, WTP, Lube Oil Recycling Unit

BDDE provides international Branded pumps all over the Bangladesh as follows
Centrifugal single stage, Multi stage, Screw, Gear, Submersible,

Configuration: Horizontal, Vertical, End suction, Inline,

Energy Technology, Liquefied Gas, Cooling Technology, Hygienic Technology, Water and Waste Water Technology



Product Showcase

Fabricated Equipment

PRODUCT SPECIALITY:

- Complete Shop Fabricated, Semi-Fabricated in Modern Manufacturing Facility
- Engineered and Constructed as per international standard (API 650/ASME BPVC)
- Global Quality Quick Delivery
- Warranty and After Sales Service



Hot Water Clarifier / Generator



Product Showcase

Fabricated Equipment

Tanks

- Fuel tank as per API 650 and BDPR 2018
- Bulk Storage Tank (Fire water, Edible Oil, DM Water, Honey, Coconut Oil etc)



Pressure Vessel



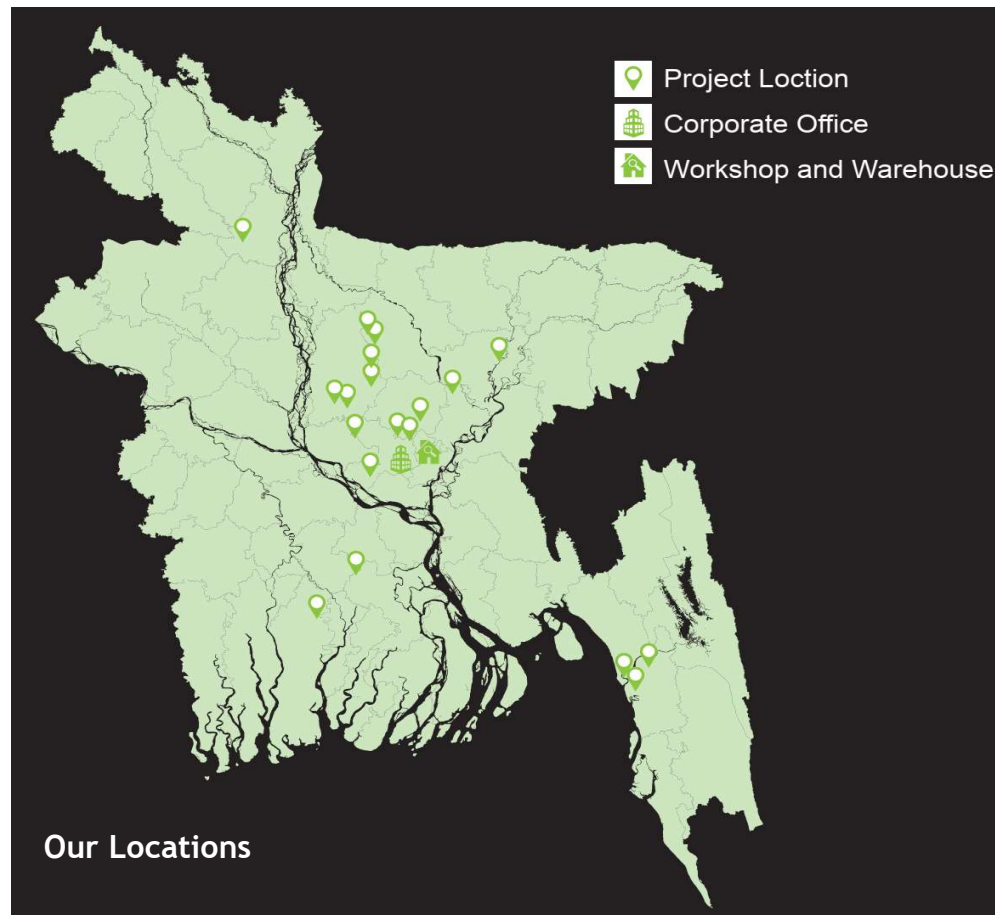
Manufacturing Vessel



Available Options: Jacketed, With Agitator, Temp Control Unit, Customized design

Thank You

www.bdd-engineers.com



Flat 10B, Azhar Comfort Complex
Ga-130/A, Progoti Sharani, Middle Badda, Dhaka-1212
Phone: 880 2 9891117, Fax: 880 2 8410843
E-mail: office@bdd-engineers.com, www.bdd-engineers.com